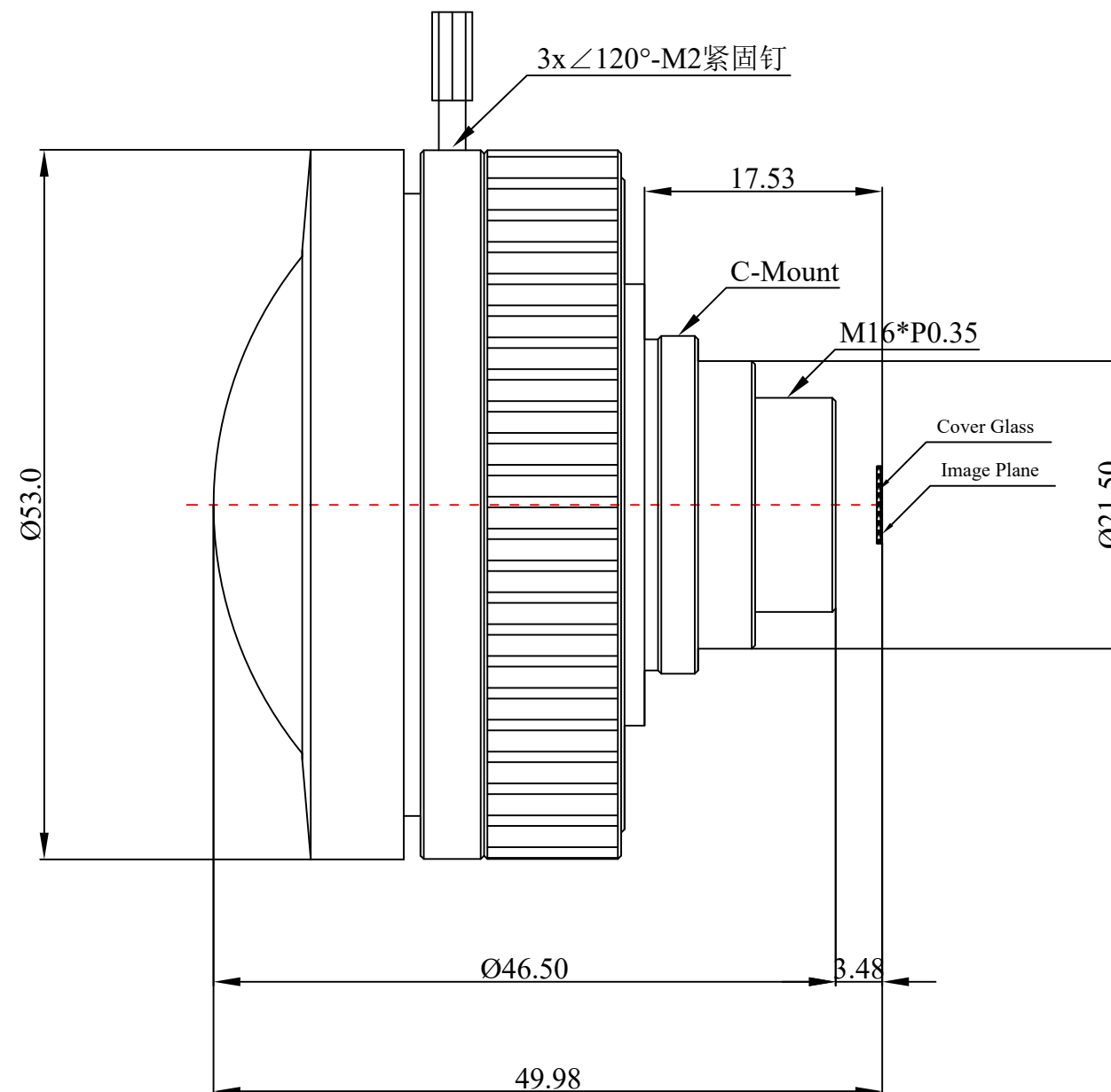
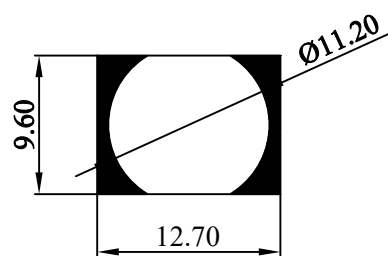
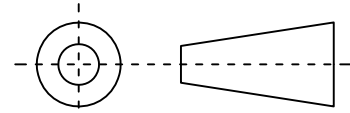


1	Type	Fisheye Lens	
2	Resolution	20MP	
3	Image Format	1"	
4	Image Circle	φ11.2mm(MAX)	
5	EFL	3.3mm	
6	TTL	49.98mm	
7	F/NO.	2.4	
8	FFL (M)	3.48mm	
9	BFL (O)	4.90mm	
10	For Sensor	Ø11.2	
11	F.O.V	Horizontal	190°
12		Vertical	---
13		Diagonal	190°
14	Distortion	0%-F-∞	
15	Relative Ill.	>80%	
16	Chief Ray Angle	<14°	
17	M.O.D	0.1m~∞	
18	Mount Type	C-Mount	
19	Dimension Figure	φ53.00*L46.50mm	
20	Lens Structure	12G	
21	IR-Filter	Non-IR	
22	Waterproof	---	
23	Weight	145g	
24	Iris Operation	Fixed	
25	Zoom Operation	Fixed	
26	Focus Operation	Manual	
27	Operating Temperature	-25° ~+85°	
28	Storage Temperature	-25° ~+85°	



Scale	Remark	Tolerances	Date	Revised		福州创安光电科技有限公司 FUZHOU CHUANGAN OPTICS CO., LTD
4:1	X	±0.2	2021-10-11	CH8037C Rev1.0		
	X.0	±0.15				
Units	X.00	±0.10	Design	Linda	2021-07-03	 3D Angle Projection
	X.000	±0.001	Checked	Anna	2021-07-09	
mm	Angle	±0.5°	Approval	Sanmu	2021-07-12	