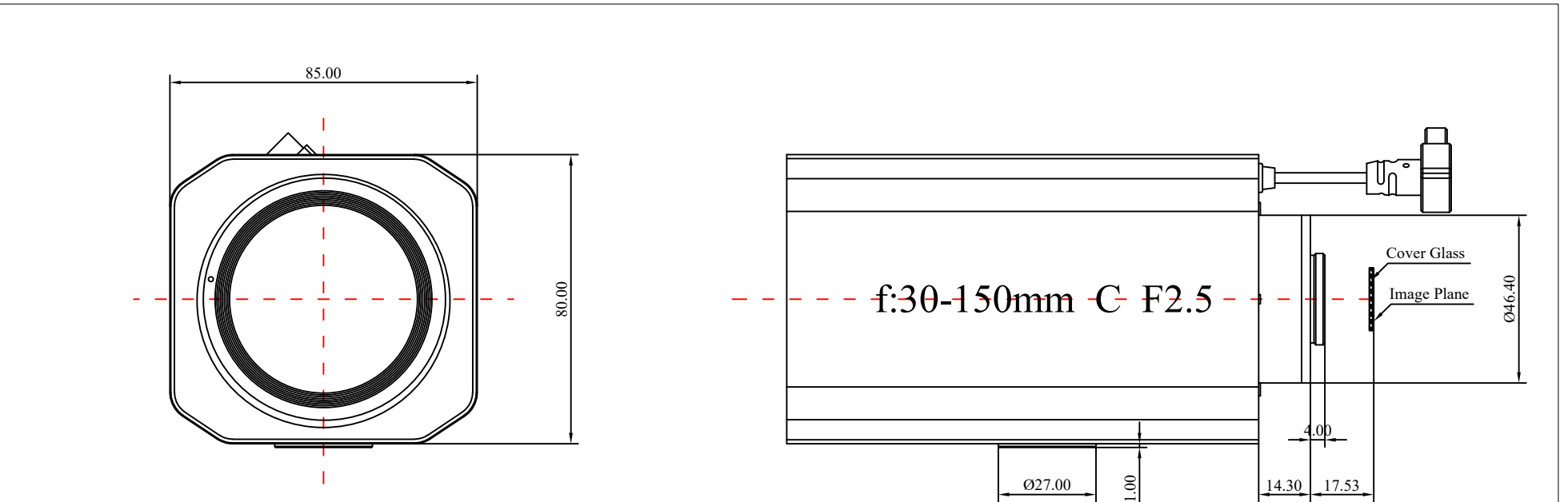
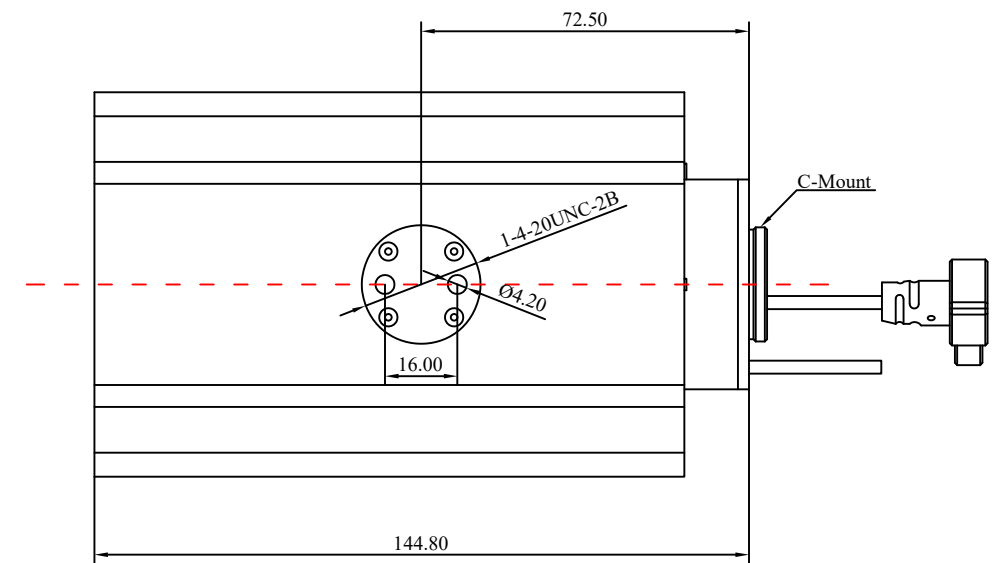


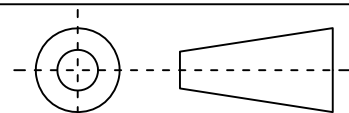
1	Type	Motor Lens		
2	Resolution	20MP		
3	Image Format	1"		
4	Image Circle	φ16.0mm(MAX)		
5	EFL	30~150mm		
6	F/NO.	F2.5(W)~2.7(T)		
7	Flange BFL	17.526mm		
8	MBF	13.526mm		
9	BFL	12.02mm		
10	For Sensor	W-T	1.1"	1"
11	F.O.V	H	26.5-7.1°	25.9-6.9°
12		V	18.1-4.9°	13.6-3.7°
13		D	32.3-8.5°	29.5-7.8°
14		OPT Distortion	<-4.3%	<-1.7%
15	CRA	<3.0°	<1.9°	
16	Relative Ill.	>45%(W), >40%(T)		
17	M.O.D	3m (W) ~ 5m(T)		
18	Mount Type	C-Mount		
19	Dimension Figure	W85*H80*L144.8mm		
20	Coating Range	400-900nm		
21	IR Correction	YES		
22	Weight	---		
23	Iris Operation	P-Iris		
24	Zoom Operation	Motorized		
25	Focus Operation	Motorized		
26	Operating Temperature	-20° ~+85°		
27	Storage Temperature	-20° ~+85°		



Iris Wire	红	A-	
	橙	B+	
	棕	B-	
	黄	A+	
FOCUS	序号	颜色	脚位
	1	白色	FOCUS A+
	2	红色	FOCUS A-
	3	黑色	FOCUS B+
Zoom	1	棕色	ZOOM A+
	2	黄色	ZOOM A-
	3	橙色	ZOOM B+
	4	绿色	ZOOM B-

电阻 Resistance	53.5±10%Ω (at 25°C)
额定电压 Rated Voltage	DC 3.3V (端子电压)
工作电压范围 Operating Voltage	DC 3.8 -5.0V
马达步进角度 Motor Step Angle	18°±3°/step
输出步进角度 Output Step Angle	0.845°/step
连续动作时间 Continuous Time	30 sec以下 (at 3.0DV)



Scale	Remark	Tolerances	Date	Revised		福州创安光电科技有限公司 FUZHOU CHUANGAN OPTICS CO., LTD
1 : 1	X	± 0.2	2019-08-19	CH195A Rev1.0		
	X.0	± 0.15				
Units	X.00	± 0.10	Design	Linda	2014-10-15	 3D Angle Projection
	X.000	± 0.001	Checked	Anna	2014-12-11	
mm	Angle	± 0.5°	Approval	Sanmu	2014-12-15	