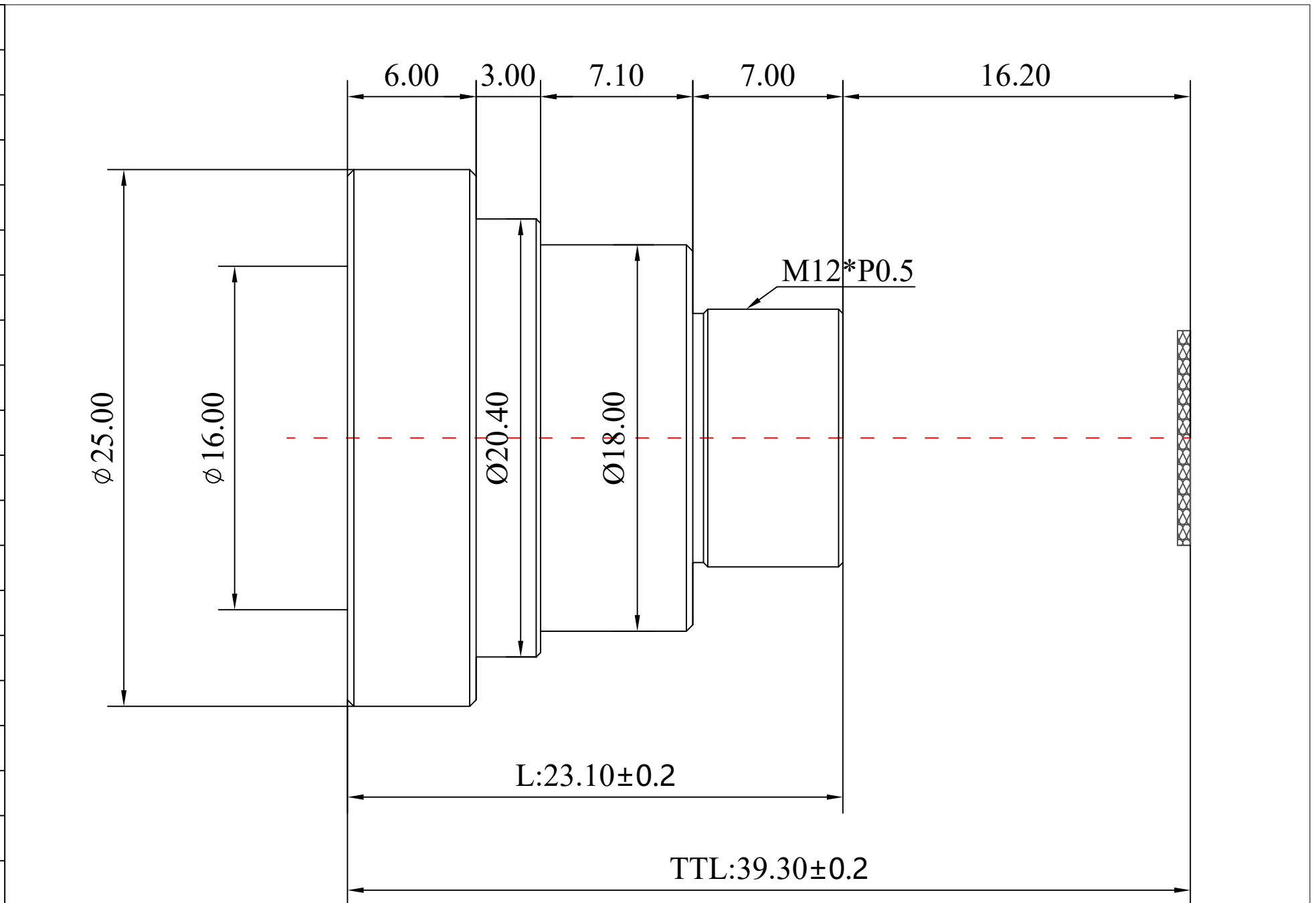


1	Type	Board Lens	
2	Resolution	MP	
3	Image Format	1/2"	
4	Image Circle	φ8.0mm(MAX)	
5	EFL	35mm	
6	TTL	39.30mm	
7	F/NO.	2.0	
8	FFL (M)	16.20mm	
9	BFL (O)	18.90mm	
10	For Sensor	1/2"	
11	F.O.V	Horizontal	10.1°
12		Vertical	7.6°
13		Diagonal	15°
14	TV Distortion	<-2%	
15	Relative Ill.	>60%	
16	Chief Ray Angle	<13.5°	
17	M.O.D	0.3m~∞	
18	Mount Type	M12*P0.5	
19	Dimension Figure	φ25.0*L23.10mm	
20	Lens Structure	6G All Glass	
21	IR-Filter	IR850nm	
22	Weight	20g	
23	Iris Operation	Fixed	
24	Zoom Operation	Fixed	
25	Focus Operation	Manual	
26	Operating Temperature	-20° ~+85°	
27	Storage Temperature	-20° ~+85°	



IR:CH6027A

Scale	Remark	Tolerances	Date	Revised		福州创安光电科技有限公司 FUZHOU CHUANGAN OPTICS CO., LTD
3: 1	X	± 0.2	2019-06-17	CH166AC Rev1.0		
	X.0	± 0.15				
Units	X.00	± 0.10	Design	Linda	2016-03-11	
	X.000	± 0.001	Checked	Anna	2016-04-12	
mm	Angle	± 0.5°	Approval	Sanmu	2016-06-15	

